

# WEBCAMDV™

## DV Camcorder to Web Cam Converter

### Users Manual

Revision date: October 26th, 2004

#### ABOUT THIS DOCUMENT

The information in this document is subject to change without notice. We welcome your comments on any area of OrangeWare products or services. Please send your comments to:



Product Manager  
OrangeWare Corporation  
155 N. Riverview Drive  
Anaheim, California 92808  
support@orangeware.com

OrangeWare may use or distribute any of the information you supply in any way it deems appropriate without incurring any obligations whatsoever.

#### Warning

This manual and the software described herein are protected by United States Copyright law (Title 17 United States Code). Unauthorized reproduction and/or sales may result in imprisonment for up to one year and fines of up to \$10,000 (17 USC 506). Copyright violators may also be subject to civil liability.

#### Copyright Information

All brand names are registered trademarks of their respective companies.

# TABLE OF CONTENTS

MINIMUM SYSTEM REQUIREMENTS .....	3
INTRODUCTION .....	3
DRIVER INSTALLATION.....	3
DV Camcorder Setup .....	3
Using WebCamDV .....	3
WebCamDV Tray .....	3
WebCamDV Controls.....	4
WebCamDV Remote Access .....	5
How do I find my IP address? .....	5
WEBCAM SOFTWARE TIPS .....	5
Microsoft NetMeeting.....	5
Getting Started with NetMeeting .....	5
TROUBLESHOOTING.....	6
HELPFUL VIDEO CONFERENCING LINKS.....	8
SUPPORT.....	8

## MINIMUM SYSTEM REQUIREMENTS

Windows 98SE, Windows Me, Windows 2000, Windows XP or Microsoft Server 2003; 700 MHz Pentium; 16-bit sound card; an available 1394 port; a DV camcorder. (Not Macintosh compatible)

## INTRODUCTION

WebCamDV transforms your Digital Video camcorder with ease into a SUPERCHARGED web cam. This software allows you to access your favorite camcorder features in today's most popular web applications such as MSN Messenger, Yahoo, AIM, etc.

WebCamDV also includes WebCamDV Remote Client. When WebCamDV Remote Client is installed on a friend, family member or business associate's Windows based PC, it will allow them access to available VCR and Camera mode controls of your DV camcorder over the Internet while viewing video in their favorite web cam application.

## DV Camcorder Setup

You will need a properly installed IEEE 1394 Bus Host Controller. If you do not have an IEEE 1394 (also called FireWire or iLink) port on your computer. It is highly recommended that you have the latest version of DirectX. (<http://www.microsoft.com/directx>). Performing the following steps will quickly get you started using your DV Camcorder as a web cam.

1. Connect the camcorder to your computer.
2. Set your camcorder to Camera Mode as you normally would when preparing to shoot a video. (Opening the cassette tape will not allow the camera to automatically shut off.)

## DRIVER INSTALLATION

1. Download the software.
2. When WebCamDV Setup appears, follow the on screen prompts.

\*\*In Windows 2000 and Windows XP a warning dialog may appear that states: The Windows software you are installing for this hardware has not passed Window Logo testing to verify its compatibility with Windows. Simply, continue with the driver installation.

1. When the Windows "Finished" dialog appears, depending on your operating system you may get a dialog asking to restart your computer, if you do select "Yes. I want to restart my computer now". Then click on the Close button. In this scenario WebCamDV will not work until you restart your computer.
2. A registration icon will appear on your desktop. Registration will allow you to be notified by email when new software updates become available for download.

Upon completion of the install the WebCamDV preview application will launch (WinXP, 2K only), click on the "Trial" box to insure functionality with your camera. If you get the option to select a capture source, select WebCamDV. You should now see video, in the preview window.

Windows 98 and ME users, upon re-boot can go to START>>PROGRAMS>>OrangeWare WebCamDV>>WebCamDV Preview

## Using WebCamDV

To use WebCamDV, select "WebCamDV Capture" as the Camera Source and "WebCamDV Audio" as the Audio Recording Source in the your web cam software. For example: Video configuration for Microsoft NetMeeting is located under the NetMeeting Tools/Options menu. Select the Video tab and choose "WebCamDV Capture" under the Video Camera properties drop down menu. The Audio configuration for NetMeeting is located under the NetMeeting/ Tools/ Options menu. Select the Audio tab then click on the Tuning Wizard button. Click Next. Under the Recording drop down menu select WebCamDV Audio.

Some web cam applications automatically pick the Windows System Sound Recording Preferred Device as the audio source and may not have an option to select a different audio source. Under these circumstances, you have two choices:

1. Change the Windows System Sound Recording Preferred Device to "WebCamDV Audio", located in the Audio tab of the Windows Multimedia (Sound and Audio Devices in Windows XP) Control Panel.

NOTE: The WebCamDV Audio feature will not work if "WebCamDV Capture" is not selected as the video source.

2. Connect a 3.5mm stereo audio cable to the headphone jack (Audio Out) of the DV camcorder. Then attach the other end of the stereo audio cable to the MIC jack on your computer.

## WebCamDV Tray

The WebCamDV tray application (figure 1), conveniently located in the Windows system tray, is active based on the choice you make in the Availability pop-up menu as shown in Figure 2.

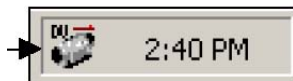


Figure 1



Figure 2

The WebCamDV tray application can be used in four ways. Point and right-click on the WebCamDV tray application to display the WebCamDV tray pop-up menu (figure 2).

Here you can select "Stop WebCamDV". You can Enable/Disable Remote Access control of your DV camcorder. If you have multiple video sources attached to your computer, you can select the source you wish to view from the WebCamDV tray. You can also choose from one of three WebCamDV tray "Availability" options:

1. The "DV Camera Attached" feature allows you to use the WebCamDV Controls to control the camcorder even if you are not using the "WebCamDV Capture" feature as the video source.

2. "Streaming Only" sets the WebCamDV tray to be active only when a DV camcorder is streaming video through a FireWire port and you are viewing the video provided by WebCamDV from a web cam application.
3. "Always" allow you to access your WebCamDV Controls so you can remotely control another DV camcorder over the Internet that has WebCamDV installed even if you do not have an attached DV camcorder.

These Availability options can also be selected in the "WebCamDV Availability" application, located in the Windows Start/Programs/OrangeWare WebCamDV menu.

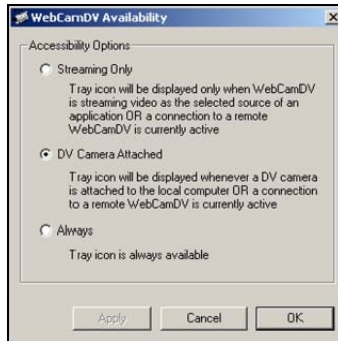


Figure 3

### WebCamDV Controls

The WebCamDV Controls will display different camera control features depending on how your DV camcorder is set. If the camcorder is in "Camera mode", the WebCamDV Controls dialog (figure 4) is available.

Point and double left-click on the WebCamDV tray application, the WebCamDV Controls application will start. If you hover your mouse over each button on the WebCamDV Controls dialog, a Tool Tips description of the button will appear. When you click on an active button, the icon in the button becomes light blue.

NOTE: Not all camcorders allow software access to the Camera Mode features. The DV camcorder must have "AV/C Camera Subunit" support for focus, zoom, wide-angle and telephoto. If these features are available, the buttons will be active.

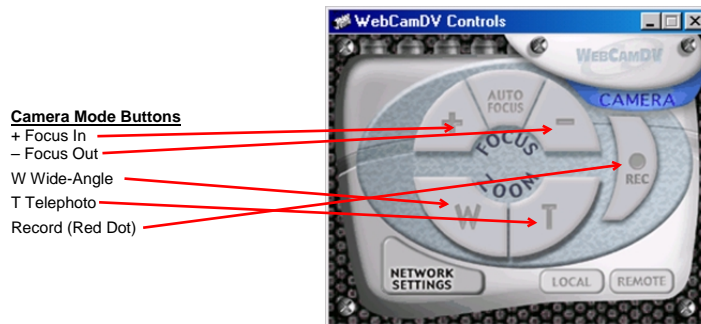


Figure 4

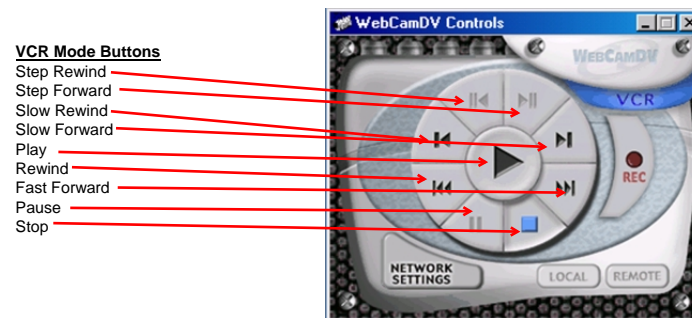


Figure 5

If the camcorder is in VCR mode, the WebCamDV Controls VCR dialog (figure 5) will appear. "Step Rewind" and "Step Forward" are only available when Pause is selected.

## WebCamDV Remote Access

The WebCamDV Remote Client application (wcdvclient.exe) will work on any Windows 98 SE or newer version of Windows. Give it to any friend or family member to copy to their computer and they can access over the Internet your WebCamDV enabled host system. They will be able to use all the same VCR and Camera mode controls that your DV camcorder supports.

The WebCamDV Remote Client is located at [www.webcamdv.com](http://www.webcamdv.com). WebCamDV Controls of a WebCamDV enabled host system can also act as a client to another WebCamDV enabled host. To prepare for remote access, click on the "Network Settings" button in "WebCamDV Controls" (figure 4 or 5). Then click on the check box next to "Enable Remote Access" (figure 6). To ensure only authorized remote users can access your DV camcorder, click on the check box next to "Remote Access Password" and enter your desired password in the Password field. Save your password by clicking on the "Set Password" button.

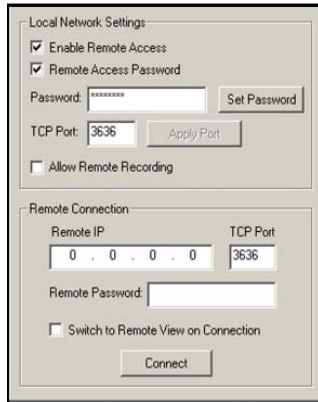


Figure 6

Figure 6 represents the fields that become available when you click on the "Network Settings" button of the "WebCamDV Controls" of the WebCamDV enabled host system.

Figure 7 represents the fields that become available when you click on the "Network Settings" button on the "WebCamDV Controls" of the WebCamDV Remote Client.

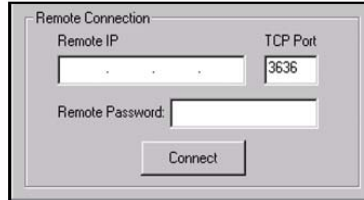


Figure 7

The "Remote Connection" section (figure 6 or 7) allows you to enter the IP address of the remote PC that is hosting WebCamDV and an active DV Camcorder. You must also enter the password of the host and ensure that the TCP Port is the same as the host system. If the host WebCamDV system is properly configured, once you click on the Connect button you will be able to control the DV camcorder.

### How do I find my IP address?

Connect to the Internet. Then click on the Windows Start menu. Select "Run..." Type in "cmd" and click on the OK button. A black window will appear with a "x:\>\_" prompt. Type "ipconfig" and hit the Enter key. Your IP Address will appear along with additional IP configuration information.

## WEBCAM SOFTWARE TIPS

### Microsoft NetMeeting

NetMeeting is an Internet communications solution providing you with basic Video Conferencing capabilities. All you need to get started is an Internet connection, a Windows based computer that meets the minimum system requirements, and a web cam. WebCamDV makes your DV camcorder look like a web cam to NetMeeting.

With NetMeeting you can:

- Place and receive live full-motion video conference calls with other NetMeeting users.

### Getting Started with NetMeeting

NetMeeting is usually preinstalled on Windows Me, Windows 2000 and Windows XP based systems. To launch NetMeeting click on the Windows Start button then select Programs/Accessories/Communications/NetMeeting.

1. Select Options on the NetMeeting Tools menu. Click on the Video tab.
2. Set the "Video Camera Properties" drop down menu to "WebCamDV Capture". Then click the OK button.
3. To preview video from your DV camcorder click on the Play/Pause button.
4. For additional online help pull down the Windows Help menu.



## TROUBLESHOOTING

### I have installed WebCamDV and cannot get video in my web cam application. Suggestion:

Check the Windows System/Device Manager to verify the "IEEE 1394 Bus Host Controller" and Imaging devices categories appear with no errors. The names of the IEEE 1394 Bus Host Controller and Camcorder may vary depending on your camcorder manufacturer and the version of Windows you are running.



NOTE: The Imaging Device will only appear if Windows detects your DV camcorder is connected to your PC. If the above devices do not appear as shown, highlight the device that appears under IEEE 1394 Bus Host Controller and click on the Remove button at the bottom of the Device Manager Window. Then reinstall the IEEE 1394 Bus Host Controller.

For assistance reinstalling the IEEE 1394 Bus Host Controller, contact the manufacturer of the IEEE 1394 Bus Host Controller installed in your system.

### I cannot select WebCamDV as an available source for video in Yahoo Messenger. What can I do?

#### Suggestion:

This happens because Yahoo Messenger will pick up the first webcam that it finds. Yahoo Messenger does not list all available cameras. Workaround: Assuming WebCamDV is already installed, turn off your DV Camcorder. Open Yahoo Messenger. Go to Tools menu and select "Start My Webcam". At this point, you should see the WebCamDV logo. Turn on DV camcorder and you should now see your video stream.

### I am running Windows 98 SE. Whenever I turn off the DV camcorder while connected to the 1394/FireWire port, my system becomes unstable. How can I prevent this from happening? Suggestion:

This is a problem with Windows 98. To avoid this problem, quit any application that is previewing video from the DV camcorder. Disconnect the DV camcorder from the 1394/FireWire port. Then turn off the DV camcorder.

### The Windows System/Device Manager appears the way it should and I still can't see video in my web cam application?

#### Suggestion:

If you already have an application accessing the camera, the web cam application will not be able to get video. Quit all applications that may be accessing the camera before starting an application you wish to access video from the camera.

### How do I use NetMeeting to video conference with a friend over the Internet? Suggestion:

First you need to know the IP Address of the person you wish to video conference. The person you wish to conference with must be running NetMeeting when you attempt to call. Start NetMeeting. Click on the NetMeeting Phone icon. Enter the IP Address of the person you wish to contact. Then click on the Call button. NetMeeting will attempt to connect with NetMeeting at the destination IP Address. Once NetMeeting establishes a connection, both NetMeeting clients will get the video of the other.

### How can I find out what my IP Address is? Suggestion:

Connect to the Internet. Then click on the Windows Start menu. Select "Run..." Type in "cmd" and click on the OK button. A black window will appear with a "x:\>" prompt. Type ipconfig and hit the Enter key. Your IP Address will appear along with additional IP configuration information.

### How to Establish NetMeeting Connections through a Firewall? Suggestion:

<http://support.microsoft.com/default.aspx?scid=kb;en-us;Q158623>

### How do I configure the Windows XP Internet Connection Firewall (ICF) for use with video conferencing applications?

#### Suggestion:

Windows XP includes an Internet Connection Firewall (ICF) that can prevent video conferencing applications from receiving QMs or calls when the firewall is enabled. This firewall can either be disabled, or configured to allow video conferencing to operate while the firewall is enabled.

To disable or configure the Windows XP Internet Connection Firewall for use with video conferencing

applications:

- 1) Right Click on 'My Network Places' on your desktop. Choose 'Properties'. This will open the Network Connections window.
- 2) Locate your Internet connection in the Network Connections window and select it. Your current Internet connection should now be highlighted. Under 'Network Tasks', select 'Change settings of this connection'.
- 3) This will open the 'Local Area Connection Properties' window. Choose the 'Advanced' Tab. If you would like to disable the firewall, simply uncheck the box under Internet Connection Firewall and click OK. Video conferencing applications will work properly with the firewall disabled. Otherwise, check the box under Internet Connection Firewall to enable the firewall, and then press the 'Settings' button to configure the Internet Connection Firewall for use with your video conferencing application.
- 4) This will open the 'Advanced Settings' window with the 'Services' tab selected. Click the Add button.
- 5) This will open a 'Service Settings' window. Video conferencing applications require open access to various ports to run properly. You will need to make a separate rule for each port required for your video conferencing application to function properly. iSpQ requires open access to TCP ports 2000-2003. The example below shows the configuration for port 2000.  
Description of Service: iSpQ port 2000  
Name or IP address of the computer hosting this service on your network: localhost  
External Port: 2000  
Internal Port: 2000  
Check the button next to TCP
- Press OK to set this rule. 'iSpQ port 2000' should now be shown in you list of services with a check next to it.
- 6) Repeat the above and create a rule for ports 2001-2003.

**What are the best lighting conditions for web conferencing? Suggestion:**

Lighting conditions for web conferencing are best when back light is not dominant. If back light cannot be prevented, many camcorders have a Back Light function that brightens the subject to compensate for a bright back light.

**Is it OK to change video camera settings while in a web conferencing application? Suggestion:**

It is highly recommended that you NOT change DV Camcorder settings while in a web conferencing application. Doing so can cause the video to lock up. Quit the application whenever changing DV Camcorder settings, such as changing the DV Camcorder from Camera mode to VCR mode to playback your DV Tape.

**How can I prevent my DV Camcorder from going into Standby mode during use as a web cam?**

**Suggestion:**

Leaving the cassette compartment open while using it as a web cam may prevent the DV Camcorder from going into Standby mode. Although the camcorder will operate on batteries alone, it is preferable to also use the supplied AC power adapter/charger that came with your camcorder.

**During a video conferencing session the audio from the person I am conferencing with is loud and distorted?**

**Suggestion:**

In the Control Panel, click on the Multimedia (Sound and Audio Devices in Windows XP) icon. Select the Audio tab, and then click on the Sound Recording Volume button. Click on the Mic Advanced button and turn OFF Boost. Also, some web applications, like NetMeeting, have a slider to adjust the microphone volume. This can be adjusted down to reduce distortion.

**During a video conferencing session I hear an echo from my friend's audio. How can I correct this?**

**Suggestion:**

Have your friend lower the volume on his speakers, or use a headset.

**After a video application crashes the WebCamDV Tray application stays running. How can I quit the WebCamDV Tray application?**

**Suggestion:**

Open a web cam application and then close it. The WebCamDV Tray application will close with the web cam application.

## **HELPFUL VIDEO CONFERENCING LINKS**

What routers work with NetMeeting - <http://www.homenethelp.com/help/netmeeting-router.asp>  
Instant Messaging your Way - <http://www.inidownload.com/download.htm>  
NetMeeting 101 - <http://www.meetingbywire.com/NetMeeting101.htm>  
Yahoo! Messenger Help - <http://help.yahoo.com/help/mesg/index.html>

## **SUPPORT**

Support for WebCamDV may be obtained via email to: [support@orangeware.com](mailto:support@orangeware.com). OrangeWare will support questions regarding WebCamDV only. Before contacting OrangeWare be sure to check our Frequently Asked Questions (FAQ) page on our website. Many questions can be answered there quickly without need to wait for an email response. The FAQ page can be found at: <http://www.orangeware.com/endusers/webcamdvfaq.html>.